



Trigger True Online double conversion **LineGuard XRT** Series UPS is rated at 1kVA, 2kVA, 3kVA, 6kVA and 10kVA, equipped to provide clean and quality backup power supply to the equipment supported.

It is designed to be Rack/Tower convertible to suit most installation in offices, banks, small Data Centre, and continuously provide power protection to enterprise servers, networking equipment, telecommunication systems, security system, and many other critical applications.

LineGuard XRT Series UPS has the flexibility to offer solutions with standards unit that comes with built-in batteries and to provide extended backup time by adding more battery modules externally. Together with the power monitoring and management software, it could provide advance power management solution, allowing graceful, unattended, systematic shutdown and management of your valuables files and data during power failure and protection against power disturbances in most of the major operating platform.



Computer/
Server



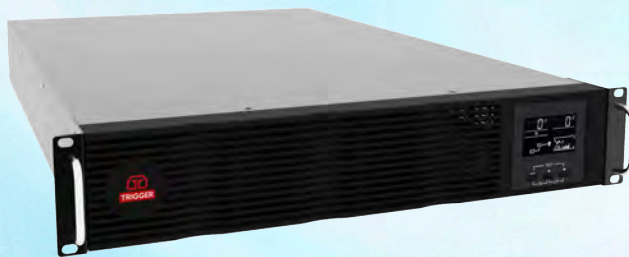
Network
Peripherals



Telecom



Security



Key Features

- Online Double Conversion UPS
- Extendable runtime
- Management software solution
- SNMP / AS400 card (optional)
- Built-in Auto Bypass
- Full protection of OV, SC and OT
- Automatic fan speed adjustment
- Unity power factor
- Self-test

LineGuard XRT Series

1 / 2 / 3 / 6 / 10 KVA

UNINTERRUPTIBLE POWER SUPPLY





Matching Battery Module for extended backup time

To achieve long backup time, it is possible to connect multiple battery modules but the principles of “same battery, same type” should be strictly followed.

The dimension and weight of external Battery Modules are as follows:

1KVA : 2//36VDC, DIM: W440*D425*H86

2KVA : 72VDC, DIM: W440*D425*H86

3/6/10KVA : 2//96VDC, DIM: W440*D767*H86

3/6/10KVA : 2//96VDC, DIM: W440*D484*H173



Control and Communication

UPS includes several communication ports: RS232, EPO, SNMP, USB, AS400, RS485.

NOTE: Only one card such as SNMP, AS400 and RS485 can be use at any time.

Only one of RS232 and USB is available at any time.

SNMP Card (Optional)

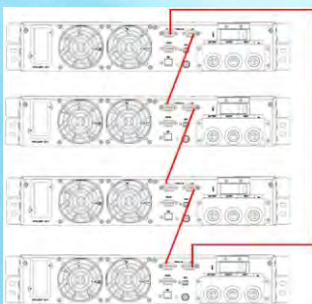
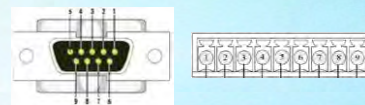
SNMP card is used to monitor the UPS via TCP/IP, user can check the UPS status, voltage and current on the internet.



Dry Contact (Optional)

There are two types of dry contact for option: DB9, phoenix terminal.

Max output current for dry contact is 1A.



Parallel Port (Optional) for 6/10kVA UPS

As long as the UPS is equipped with parallel cables, up to 4 UPS can be connected in parallel to obtain output power sharing and power redundancy.



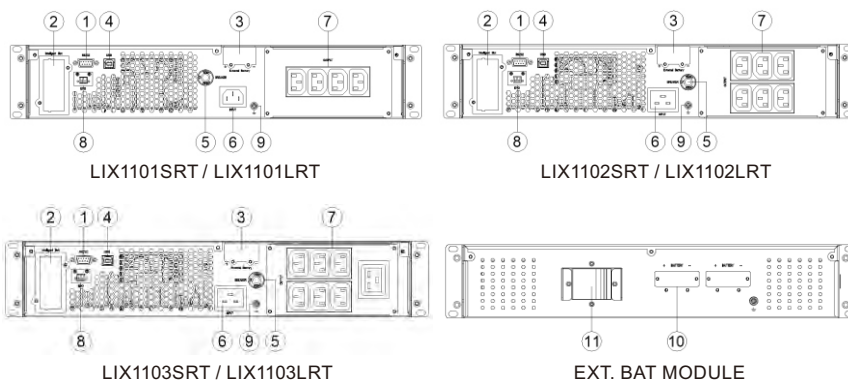


LineGuard XRT Series



| MODEL | LineGuard XRT Series | | | | | |
|----------------------------------|---|----------------|----------------|-----------------|-------------------|-----------------|
| Model | LIX1101SRT | LIX1101LRT | LIX1102SRT | LIX1102LRT | LIX1103SRT | LIX1103LRT |
| CAPACITY | | | | | | |
| Capacity (VA) | 1 kVA | | 2 kVA | | 3 kVA | |
| Capacity (W) | 1 kW | | 2 kW | | 3 kW | |
| INPUT | | | | | | |
| Nominal Voltage | 230 VAC | | | | | |
| Voltage Range | 100 to 300 VAC (100% load @ 176~300VAC; 176~100VAC linearly derate from 100% to 50% load) | | | | | |
| Frequency | 40 - 70 Hz | | | | | |
| OUTPUT | | | | | | |
| Nominal Voltage | 208/220/230/240 VAC | | | | | |
| Voltage Range | +1% to -1% | | | | | |
| Frequency | LINE mode: 50/60 +6 Hz to -6 Hz, settable; BAT mode: 50/60 Hz +0.001 Hz to -0.001 Hz | | | | | |
| Wave Form | Pure Sinewave | | | | | |
| Transfer Time | LINE to BAT mode 0 ms; INV to BYP mode 4 ms sync; BYP to INV mode 4 ms syn; ECO to BAT mode 6 ms | | | | | |
| Total Harmonics Distortion (THD) | ≤ 3% with linear load; ≤ 5% with non-linear Load | | | | | |
| BATTERY | | | | | | |
| Type | Valve-Regulated Maintenance Free Sealed Lead Acid | | | | | |
| Battery Rating | 12V, 9AH | Dependable on | 12V, 9AH | Dependable on | 12V, 9AH | Dependable on |
| No. of Batteries | 2 | EXT. BAT | 4 | EXT. BAT | 6 | EXT. BAT |
| DC Voltage | 24 VDC | 36 VDC | 48 VDC | 72 VDC | 72 VDC | 96 VDC |
| Charging Current (max) | 1A | 8A or 4A | 1~4A, settable | 1~12A, settable | 1~4A, settable | 1~12A, settable |
| INDICATIONS | | | | | | |
| LCD + LED | Input & Output Voltage, Current, Frequency, Load level / Battery capacity, Voltage / Bypass / Fault | | | | | |
| AUDIBLE ALARMS | | | | | | |
| Battery Mode | Beeping every 4 seconds | | | | | |
| Battery Low on DC Mode | Beeping every 2 seconds | | | | | |
| Fault / Overload | Continuous Beeping | | | | | |
| ENVIRONMENT | | | | | | |
| Operating Temperature | 0° to 40°C (32° to 104°F) | | | | | |
| Relative Humidity | 0% to 90% Non-condensing | | | | | |
| Noise Level at 1 meter | ≤ 50dB dependable on load level | | | | | |
| PROTECTION | | | | | | |
| Overload Capability (Inverter) | 102% ~ 110%: 30 min; 110% ~ 130%: 10 min; 130% ~ 150%: 30 s ; >150%: 200 ms | | | | | |
| Overload Capability (Bypass) | 102% ~ 110%: 10 min; 110% ~ 130%: 1 min; 130% ~ 150%: 10 s ; >150%: 200 ms | | | | | |
| COMMUNICATION | | | | | | |
| Interface | Smart RS232 with bundled software | | | | | |
| SNMP (Optional) | Power Management from SNMP Manager and Web Browser | | | | | |
| Dry Contact (Optional) | DB9 port, AS400 | | | | | |
| PHYSICAL | | | | | | |
| Dimensions (W x D x H) mm | 440x405x86(2U) | 438x405x86(2U) | 440x482x86(2U) | 440x482x86(2U) | 440x600x86(2U) | 440x482x86(2U) |
| Weight (kg) | 10.5 | 5.7 | 18.6 | 9.4 | 24 | 11.5 |
| Outlets | (4) C13 | | (6) C13 | | (6) C13 + (1) C19 | |
| CERTIFICATIONS | | | | | | |
| Safety Approvals | CE, RoHS | | | | | |

Note: The product specification listed is subjected to change without notice.



- 1 RS232 communication port, DB9 type
- 2 Intelligent slot
- 3 Battery port. Optional for 'S' model
- 4 USB port, B type
- 5 Input surge protection
- 6 Input socket. 1kVA: IEC C14, 2kVA/3kVA: IEC C20
- 7 Output socket, IEC C13
- 8 EPO. Short to activate
- 9 Chassis ground
- 10 Battery port
- 11 Battery breaker
- 12



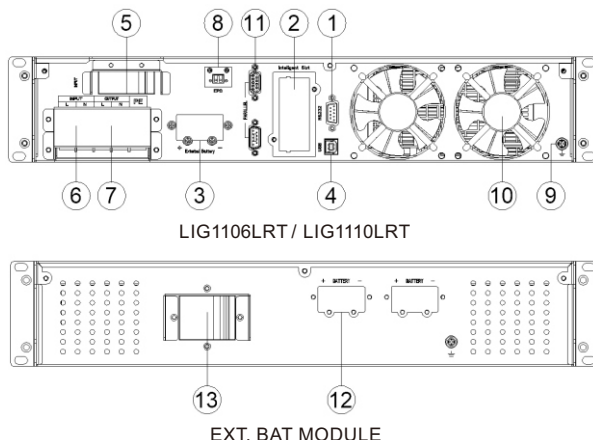


LineGuard XRT Series



| MODEL | LineGuard XRT Series | | | |
|----------------------------------|---|------------------------|-----------------|------------------------|
| Model | LIX1106SRT | LIX1106LRT | LIX1110SRT | LIX1110LRT |
| CAPACITY | | | | |
| Capacity (VA) | 6 kVA | | 10 kVA | |
| Capacity (W) | 6 kW | | 10 kW | |
| INPUT | | | | |
| Nominal Voltage | 230 VAC | | | |
| Voltage Range | 100 to 300 VAC (100% load @ 176~300VAC; 176~100VAC linearly derate from 100% to 50% load) | | | |
| Frequency | 40 - 70 Hz | | | |
| OUTPUT | | | | |
| Nominal Voltage | 208/220/230/240 VAC | | | |
| Voltage Range | +1% to -1% | | | |
| Frequency | LINE mode: 50/60 +6 Hz to -6 Hz, settable; BAT mode: 50/60 Hz +0.001 Hz to -0.001 Hz | | | |
| Wave Form | Pure Sinewave | | | |
| Transfer Time | LINE to BAT mode 0 ms; INV to BYP mode 0 ms sync; BYP to INV mode 0 ms; ECO to BAT mode 2 ms | | | |
| Total Harmonics Distortion (THD) | ≤ 2% with Linear Load, ≤ 5% with non-linear Load | | | |
| BATTERY | | | | |
| Type | Valve-Regulated Maintenance Free Sealed Lead Acid | | | |
| Battery Rating | 12V, 9AH | Dependable on EXT. BAT | 12V, 9AH | Dependable on EXT. BAT |
| No. of Batteries | 16 | | 16 | |
| DC Voltage | 192 VDC | | | |
| Charging Current (max) | 1~12A max, settable | | | |
| INDICATIONS | | | | |
| LCD + LED | Input & Output Voltage, Current, Frequency, Load level / Battery capacity, Voltage / Bypass / Fault | | | |
| AUDIBLE ALARMS | | | | |
| Battery Mode | Beeping every 4 seconds | | | |
| Battery Low on DC Mode | Beeping every 2 seconds | | | |
| Fault / Overload | Continuous Beeping | | | |
| ENVIRONMENT | | | | |
| Operating Temperature | 0° to 40°C (32° to 104°F) | | | |
| Relative Humidity | 0% to 90% Non-condensing | | | |
| Noise Level at 1 meter | < 55dB dependable on load level | | | |
| PROTECTION | | | | |
| Overload Capability (Inverter) | 102% ~ 110%: 30 min; 110% ~ 130%: 10 min; 130% ~ 150%: 30 s ; >150%: 200 ms | | | |
| Overload Capability (Bypass) | 1102% ~ 110%: 1 min; 110% ~ 130%: 10 s; 130% ~ 150%: 3 s ; >150%: 200 ms | | | |
| COMMUNICATION | | | | |
| Smart RS232 | Smart RS232 / USB with bundled software | | | |
| EPO | Short to activate | | | |
| SNMP (Optional) | Power Management from SNMP Manager and Web Browser | | | |
| Dry Contact (Optional) | DB9 port, AS400 | | | |
| PHYSICAL | | | | |
| Dimensions (W x D x H) mm | 440x778x173(4U) | 440x513x86(2U) | 440x778x173(4U) | 440x513x86(2U) |
| Weight (kg) | 43 | 11 | 50 | 11.5 |
| Outlets | Terminal | | | |
| CERTIFICATIONS | | | | |
| Safety Approvals | CE, RoHS | | | |

Note: The product specification listed is subjected to change without notice.



- 1 RS232 communication port, DB9 type
- 2 Intelligent slot
- 3 Battery port
- 4 USB port, B type
- 5 Input protection breaker
- 6 Terminal - Input
- 7 Terminal - Output
- 8 EPO. Short to activate
- 9 Chasis ground
- 10 Ventilation fan
- 11 Parallel connection port
- 12 Battery port
- 13 Battery breaker

